



National Geospatial-Intelligence Alumni Association West NGAA-West

Volume 2 Number 4

Newsletter

December, 2013

NGAA WEST LUNCHEON WEDNESDAY

<i>In This Issue</i>	<i>Page</i>
• December luncheon reservation	1
• NGA News	2
• NGAAW Presidents News	2
• September 2013 Luncheon News	3
• Arsenal Credit Union Sponsorship	3
• Board of Directors News	3-4
• Newsletter Publication Cost	4
• Treasurer's Report	4
• Membership News	4-5
• Rest in Peace	5
• Sick Members	5
• New Groups or Activities	5
• Sports: Bowling Leagues	5
• Sports: Golf	6
• Duffy's Corner	6
• Negative Engravers Luncheon	6
• Points Report	6
• Photo Breakfast Club	7
• Chart Researcher's Luncheon	7
• Volunteer Mapping Efforts	7-10
• Red Cross Philippines	7-9
• Sky Truthing	9-10
• USGS National Map Volunteers	10
• ASPRS News	10-11
• NGAA West Calendar	11
• Alumni NGA Visit Photo	12
• September Luncheon Photos	12-15
• NJVC Credit	15
• Membership Application	16

December 11, 2013

Entertainment by

"Sound Unlimited"

Rat Pack, Soul, and All That Jazz performed by the "biggest small" band in town...from Sinatra to Buble and just about everything in between.

LUNCHEON SCHEDULE

Cocktails 11:30 am Lunch 12:00 pm

PIETRO'S
3801 Watson Road

314-645-9263

Price: \$18.00 per person

MENU: Your selection will be confirmed by the wait staff at the luncheon from one of the following:

Filet of Sole. Broiled in lemon butter sauce

Chicken Ala Pietro. Six oz. boneless breast of chicken

in a white wine and fresh mushroom sauce

Top Sirloin Steak. 10 oz. serving

Lunch selections are served with salad, pasta, vegetable, bread, butter, a beverage (water, coffee, tea, soda), and a dessert.

The wait staff will take your bar order on a cash basis only

----- Print this page -----

December 11, 2013 Luncheon Reservation Form

<u>Planned Entrée Choice</u> (Confirm at the luncheon. One per Attendee)	Fish	Chicken	Beef
Member name: _____	_____	_____	_____
Spouse name: _____	_____	_____	_____
Guest name: _____	_____	_____	_____
CHECK Number: _____			

Please mail to arrive by December 4, 2013

**MAIL TO:
NGAA West
P.O. Box 510091
St. Louis MO 63151-0091**

CHECK THIS BOX IF YOU WANT A REMINDER CALL ON TUESDAY December 10, 2013

NGA NEWS
NGAA-WEST VISIT TO NCW
November 7, 2013

By Jessica Daues, Office of Corporate Communications

Thirty-one alumni visited NGA during Alumni Day at NCW. NGA Alumni Day is part of an initiative to establish greater engagement with NGA alumni including collaboration and mutual support.

The day began with a talk from Chief Operating Officer Ellen McCarthy, who welcomed the alumni and told them the agency was “eager to strengthen our relationship with you.”

“You know our mission,” said



McCarthy. “You know where we’ve been.”

McCarthy said that a big challenge for NGA has been the agency’s increasing need to partner with the private sector.

“With your experience and expertise, you can help us with that task,” she said.

The alumni were briefed by current NGA employees highlighting the agency’s vision and goals. Those presenting include representatives from the Integrated Working Group – Readiness, Response and Recovery, IWG-Iran, Aeronautical Navigation Office, Office of Central and Southwest Asia and Xperience Directorate’s GEOINT App Store.



Bruce Farnham of the Aeronautical Navigation Office demonstrates how pilots use handheld tools to access NGA Aero products.

The alumni also toured the NGA Operations Center and NGA Museum.

Many alumni said they were excited to have the opportunity to revisit their old workplace.

“We had a security clearance, but once that is taken away, you can’t come back,” said Bob Bentrup, who retired in 2006 after 30 years at NGA. “This was an

NGAA-WEST VISIT TO NCW

opportunity to get back in the door to see old acquaintances and see how the place has changed.”

Many alumni left impressed by NGA’s embrace and use of technology in everyday work.

“Technology is the biggest change,” said Norris Decker, who retired in 1996 after 31 years at NGA. “What they’re doing now and how much customer reach they have, with things posted online, are amazing.

“When I left, we were just starting to get email,” Robert Eddy, who retired in 1994 after 32 years at NGA. “I had just gotten a computer at my desk.”

Decker said that the agency’s widespread customer base was also a significant change.

“When I first started, our customer was primarily the Air Force,” Decker said. “Now we’re helping the nation, everyday people, in times of need. I wouldn’t even have dreamed of that when I was here.”

The group photo is on page 12.

NGAA-WEST PRESIDENT’S NOTES

FROM KENT KENNISTON:

“It has been my Pleasure to Serve the Members of NGAA-West for the past two years as Vice President and President! Thank You to ALL for your cooperation and encouragement. Now it is time for me to sit back and write my Biography and hit you all for funds for my Presidential Library! Don't be afraid to accept the challenge!”

FROM JIM MOHAN:

“First let me begin by thanking Kent, and all of those who have held the office of President before me, for laying such a great foundation. Their efforts, along with the other officers of the organization, have made the NGA Alumni Association West the success it is today.

But keeping our organization successful and viable in the future means that we must keep moving forward and growing. It is gratifying too that NGA is interested in engaging its alumni organizations and sees them as important to the success of the Agency. The recent invitation to our members to visit and see the critical work being done by your successors was an important step, one I hope we can build on. We may have “clocked out” for the last time as employees, but I think all of us still feel it is “our” Agency and we would do anything to help it advance its important mission.

From my background at NGA as a public affairs officer, you can guess one of my primary areas of interest will also be communication. So we will use our meetings, the newsletter and email to keep you informed of developments at NGA and issues and concerns of federal retirees. But communications is a “two-way” street. Your officers need to hear from you. We need your suggestions, input and feedback if we are going to keep this organization successful.”

SEPTEMBER 2013 LUNCHEON NEWS

By Pat Wiese

The fall NGAA West Luncheon was held on Sept. 25 at Pietro's Restaurant. There were 41 attendees at the luncheon. Jim Mohan led us in the Pledge of Allegiance and Bob Eddy said the invocation. We were pleasantly entertained by Kevin Allen, also known as "Kevin - the One Man Circus", and his twin brother, Chris. They are sons of a former NGA Guard, Vic Allen.

The following attendees were winners of the 50/50 drawing: Larry Knopf (2), Jim Stanton (2), Jerry Lenczowski, Bob Eddy, and Fred Meister.

[ARSENAL CREDIT UNION TO SPONSOR NGAA-WEST LIFETIME MEMBERSHIP](#)

The Arsenal Credit Union (ACU) has agreed to sponsor the NGAA-West Chapter. The ACU will reimburse \$40.00 toward a lifetime membership of \$100.00 for any new applicant. The reimbursement is limited by the following:

The Arsenal Credit Union (ACU) will reimburse \$40 toward a lifetime membership of \$100 for any new applicant. The reimbursement is limited by the following:

1. Retiree must be a member in good standing at Arsenal Credit Union for a minimum of 1 year.
2. Reimbursement is limited to \$40.00 toward a lifetime membership with NGAA-West.
3. Retirement must have occurred after 31 January 2013.
4. Retiree must provide their ACU account number with their application.

After we process your application, we will notify ACU of your membership. The ACU will credit your account with \$40.00 after the ACU has reviewed the conditions. This program will be reviewed by ACU in 2015 to ascertain its success and to make any modifications deemed appropriate at that time. The link to the ACU web site is: Arsenalcu.org.

[NGAA WEST & EAST MEMBERSHIP DIRECTORIES](#)

The current Directories of West Chapter and East Chapter members are available on the NGAAW web site. Members should follow these steps:

1. In your browser window type:
<http://www.ngaawest.org>
2. Click on the 'Members Home' button under the main central logo.
3. A log in window will appear and you should enter the following: User ID enter **ngaawest** and for password enter **arsenal**

The Directory is **for members only**.

[NGAA WEST INPUT TO NGA PATHFINDER PUBLICATION](#)

NGAA-West members have the opportunity to submit articles for future publication in the NGA Pathfinder magazine. Members will receive an email notification from NGAA-W identifying a subject theme for the submitted article. A date will be stated when the article needs to be received by NGAA-W. The following guidelines apply for all submissions:

"The desired article length is 150 words; a general article can be longer but should not exceed one Pathfinder page (approx. 600 words). If at all possible, all submissions should be accompanied by a photo or artwork and should include quotes -- either from persons or documents. The article should be in Word format, text only. Photographs need captions and credits. Also, each image submitted must be a separate .jpg file with a minimum 300 dpi for a 4x6 inch image."

[BOARD OF DIRECTORS' NEWS](#) [2014 BOARD MEMBERS](#)

Russ Wall	Board Chairperson	314-487-9551
Bob Meinhardt	Senior Advisor	314-638-4555
Jim Mohan	President	314-846-4464
Marilyn Chryst	Exec Vice-President	314-845-2497
Bob Eddy	Treasurer	636-296-8831
Pat Wiese	Secretary	
Jimmie Hilterbrand	Vice-President Membership	
Pat Wiese	Hospitality Chairperson	
Larry Knopf	Golf Committee Chairperson	
Jack Panula	Member-at-Large	
Leroy Schmieder	Member-at-Large	
Bob Bentrup	Mailing Committee Chair	
Jerry Lenczowski	VP Communications	
Newsletter Email	aerochart@sbcglobal.net	
Robert Pankey	NGAA-West webmaster	

[NGAA-WEST BOARD POLICY](#) [Refund of Reservation Payment](#)

The NGAA-West continues the former ACS policy: "All luncheon reservation requests are recorded as they are received. On the Thursday prior to a luncheon the expected number of meals by type is provided to Pietro's. On the Monday prior to the luncheon Pietro's is again called with the expected number of each selection and with the total number of attendees. NGAA-West is then committed to these numbers and must pay for the number of meals reserved. Refunds or luncheon vouchers are ONLY issued to those individuals who call in a cancellation at (636) 296-8831 prior to the Monday preceding the luncheon. Therefore, there will be no refund or luncheon voucher issued for an individual who does not attend the luncheon without that prior notification." **As an example**, for the June 26, 2013 luncheon call (636) 296-8831 **before June 24, 2013, if you must cancel.**

[NGAA-WEST NEWSLETTER PUBLICATION](#)

For the last three years, the NGAA-West Chapter (ACS) has benefited from a community service clause in the NJVC contract with NGA, which provided us with excellent printing. That contract has ended.

As a consequence, we are now confronted with increased costs for printing the paper version of our newsletter. Once again, we encourage our readers to use the electronic publication, available by email or, in a redacted version, at our website. Among our membership, we have 103 members who are mailed the paper version every quarter. 82 do not have or have not provided an email address and 21 prefer to receive a printed copy. Even as a non-profit organization, we do not quality for bulk postal rates since we are not mailing over 200 copies.

To print 110 newsletters each quarter, the estimated printing cost is about \$330, totaling about \$1300 for the year. The postage cost is about \$200 annually. Clearly the cost of printing is the major concern that we are bringing to your attention.

The Board will address this issue when it convenes in January 2014. We ask members to provide suggestions and recommendations or to raise concerns and issues. Please contact any board member.

NGAA WEST TREASURER'S REPORT

REPORT DATE: 11/11/2013

REPORT PERIOD: 01/01/2013 to
11/11/2013

TOTAL RECEIPTS:	\$ 6,710.30
ANNUAL MEMBERSHIP DUES	950.00
LIFE MEMBERSHIP DUES	1,390.00
LUNCHEON TICKETS	2,934.00
50/50 TICKETS	150.00
INTEREST RECEIVED AND ACCRUED	33.80
ASSOCIATE MEMBERSHIP (GOLF) DUES	910.00
NGAA RECEIPTS	50.00
MISC. RECEIPTS	292.50

TOTAL DISBURSEMENTS:	\$5,369.32
LUNCHEON SITE – MEALS	3,040.00
DIRECTORY EXPENSE	385.00
DIRECT PAY OPERATING EXPENSE	202.91
POST OFFICE	582.90
TABLE PRIZES	227.40
PROGRAM – ENTERTAINMENT	200.00
GOLF LEAGUE EXPENSES	385.86
FUNDS TO NGAA	25.00
LUNCHEON VOUCHERS / REFUNDS	18.00
MISC. EXPENSES	302.25

TOTAL MONIES AVAILABLE	\$ 14,550.53
NON-ALLOCATED MONIES AVAILABLE	\$ 9,237.69
MONIES IN ALLOCATED FUNDS	\$ 5,312.84

Please refer any questions to Mr. Bob Eddy at roblucedd@sbcglobal.net or (636) 296-8831

REQUEST FOR HEALTH STATUS INFORMATION

If you are aware of any former co-worker or his/her family member that is ill, in the hospital, or has passed away, please call or email the NGAA West Chapter Board so that we can inform your fellow members.

WELCOME TO NEW MEMBERS

Our Membership Chair introduces six new members. We encourage their attendance at the September luncheon.

John P. Bode

[REDACTED]

Joy

bluedenver@sbcglobal.net

Shawn J. Dilles

[REDACTED]

Susan

sjdilles@gmail.com

James C. Jeske

[REDACTED]

Jim2119@msn.com

Charles L. McGaugh

[REDACTED]

Linda

Blakeman0826@sbcglobal.net

Donald E. Poff

[REDACTED]

d-poff@sbcglobal.net

Regina J. Squires

[REDACTED]

Chuck

gina.squires@att.net

CHANGES AND CORRECTIONS

Ward P. Klocke

wklocke28@hotmail.com

Mary Lee Lurton

[REDACTED]

George N. Manders

gmanders45@gmail.com**CHANGES AND CORRECTIONS****Joseph A. Pfeifer**
**Thomas E. Porthouse****Joan (D)**jporthou@charter.net**Monica Sharp**qltr56@gmail.com **REST IN PEACE** 

The NGAA-West members extend our sincerest condolences to their loved ones and friends. Please keep them in your thoughts and prayers.

John Fitzgerald Kennedy	November 22, 1963
James Connolly	September 14, 2013
Rose Donnell	September 14, 2013
Carol Korte (Ken)	September 29, 2013
Joseph Brocatto	September 30, 2013
Kevin Messmer	October 21, 2013
Andrew Lewandowski	November 1, 2013
Robert Sostman (Shirley)	November 11, 2013
Henry A. Thomas	November 12, 2013

SICK MEMBERS / FORMER CO-WORKERS

Tony Caiazzo	Jim Stayton
Carol Stamer	Herman Westrich
Darryl Crumpton	Hank Bauer
Charles Doolin	Norma Doolin
Marlyn Meoli	Thomas Seppelin
Paul Gegg	Beverly Schmidt
George Cline	Bill Volk
Ron Foster	Tony Ferguson
Viola (Vi) Niederschmidt	Verna Creel

Stay in touch with these individuals.
They appreciate your thoughtfulness.

NGAA-WEST MEMBER GROUP NEWS**REQUEST FOR NEW GROUPS & REPORTS**

The NGAA-West Board extends a welcome to all the NGA and its predecessor organization employee and retiree groups.

Want to stay healthy and busy? Members of NGAA-West can do so physically through bowling or golfing activities and socially at luncheons and other group meetings.

But what about mentally? Is anyone interested in keeping the old gray matter active in a fun way? I'd like to start a conversation about having a "game night" once a month. It could mean playing cards, scrabble or other games or puzzles that take some minor (and therefore enjoyable) thinking. I'm not talking computer games!

Let me know if you're interested. Marilyn Chryst, mchryst@stlcc.edu or 314-845-2497.

NGAA WEST SPORTS**BOWLING NEWS****ARSENAL MIXED LEAGUE****SUNSET LANES**

By Pat Wiese



The Arsenal Mixed League is in its third season at Sunset Lanes. We have added a few new faces to our league this year. Due to his illness, our most popular bowler, Johnnie Betts, made a surprise appearance last week to see all his former (didn't want to use the word "old") teammates and league friends. He is just as bubbly as ever. It was good to see him and get a hug.

After the position round for the first half, the standings are as follows: Rollercoasters, Spare Change, Fab Four, Purple Turkeys, Care Bears, Rookies, and Alley Slugs. There is still time for all of this to change.

We had our Halloween party and everyone enjoyed all the tasty treats that were brought by the teams. No one had to do a trick. Several of the newer bowlers even dressed in costume.

If you are still working at NGA, or of NGA legacy, and are interested in joining the league or know of someone that would like to bowl on Wednesdays at 4 PM, please contact Pat Wiese, 314-385-7845.

THURSDAY INVITATIONAL LEAGUE**SUNSET LANES**

By Doug Nolte

The 2013 version of the NGAA-West Men's bowling league kicked off (or rolled off) on the 5th of September at the Sunset Lanes where we've been knocking down the pins for the past 3 seasons. Unfortunately, one sad note to begin; one of the team captains (Kevin Messmer) passed away on October 21, just a few weeks after he retired from NGA. An appropriate moment of silence was observed for this fine fellow worker/bowler before one of our sessions.

Thus far (10 weeks in), no team has run away from the pack so the first half title is still up for grabs. The first half will be over on the 12th of December so we'll see who's top dog at that time. Last year's champion, the Stretch Runner's, have seriously faded this year but please let's not count them out. They have some seasoned veterans who can put up some great scores at any time. As we have been since 2010, we are at Sunset Lanes on Watson Road. We start the competition at 4:00 in the afternoon and as the title suggests, it's Thursday.

NGAA-WEST GOLF NEWS 2013

Submitted by Doug Nolte



The final outing for the 2013 NGAA-West Golf group occurred at the fine Whitmoor Country Club on the 10th of October. The weather was outstanding and all 116 of the attendees had a great time. We were treated to a wonderful meal after the outing and received a lot of praise from most who attended. It appears we will be using the same facility in the future for our final outing, a decision that will be left up to the golf committee, which was equally impressed with our treatment.

This outing concluded a very successful season which began on the 11th of April at the same Country Club and with the exception of one cancellation, the very next week on April 18th, we had a clean slate of wonderful golf on some excellent courses that showed perhaps their best conditions in years thanks to plenty of timely rains during the early months of the schedule.

There were 27 outings scheduled for 2013 and the 2014 season should prove just as enjoyable with the bulk of the 2013 courses being revisited.

During the off-season our Commissioner, Larry Knopfel, will be busy once again contacting all these courses to set up the appropriate dates. The initial outing will once again be in mid-April with the final being in early October.

For results from our outings go to the website at <http://ngaawest.org>.

The Golf Group Committee

Ed de la Peña (314) 846-6925 Jack Eckhard (636) 394-4315
 Bob Eddy (636) 296-8831 Larry Knopfel (636) 561-2280
 Ron Muse (314) 306-6930 Doug Nolte (636) 391-7266
 Randy Pratt (314) 607-9151 Dennis Terhaar (314) 487-5209

DUFFY'S INFORMAL LUNCHEONS (DILS)**Open Invitation**

By Pat Wiese

Former NGA and NGA legacy employees meet for an informal luncheon at Duffy's 124 W Jefferson Ave. #104, Kirkwood, MO on the first Wednesday of every month at 11AM. Come join them when they meet on December 4, 2013, January 8, February 5, and March 5, 2014.

NEGATIVE ENGRAVERS LUNCHEON

Submitted by Rich Egan

The Negative Engravers met at El Maguey in Concord Plaza on Thursday November 14th. The attendees included, Don Lippold, Harry Lemakis, Ernie South, John Carty, Larry Weicz, and Rich Egan. The Xmas luncheon

will be held at the same location on December 12th. I hope we will have a large attendance. All

NEGATIVE ENGRAVERS LUNCHEON

engravers are welcome. See you then & there. Merry Xmas

This group currently meets the 2nd Thursday of each month at 12:30 PM at El Maguey restaurant in Concord Plaza, St. Louis County MO. Any retired employee of NGA or NGA legacy is invited to join this small group over tamales, burritos, enchiladas, beans and rice. Dos Equis and Margaritas are also available. The engravers meet the 2nd Thursday of each month at this location, and all are welcome, even Cartographers.

Come join them when they meet on **December 12, 2013**
January 9, February 13, and March 13, 2014.

POINTS REPORT

By Bob Eddy

The Points Group meets the 1st Wednesday of each month at the Hometown Buffet, located on South Lindbergh at 11 AM.

Fifteen individuals attended the September luncheon. The attendees were Dave Alspaugh, Sam Brewer, Vern Edelmann, Bob Eddy, Jim Hilterbrand, Jim Huettenmeyer, Jim Johnson, Don Neubacher, John Novak, Kevin Perry, Larry Rambo, Gene Sylvester, Danny Wells, Dale Winters and Jim Wynn.

Thirteen retirees attended the October luncheon. This month we were joined by a recent retiree, Bill Hufnagel. The other attendees were Charlie Bird, Sam Brewer, Bob Eddy, Jim Hilterbrand, Jim Huettenmeyer, Jim Johnson, Don Neubacher, Kevin Perry, Larry Rambo, Gene Sylvester, Dale Winters and Jim Wynn.

There were eighteen attendees at the November luncheon. They were Dave Alspaugh, Charlie Bird, Sam Brewer, Charlie Castro, Bob Eddy, Vern Edelmann, Jim Hilterbrand, Jim Huettenmeyer, Bill Hufnagel, Jim Johnson, Don Neubacher, John Novak, Jim Raby, Larry Rambo, Ed Schaaf, Gene Sylvester, Dale Winters and Jim Wynn.

Several of the attendees never worked in Points, so the group is not restricted to Points people but for retired DMAAC/NIMA/NGA employees who want to enjoy the camaraderie of the group.

Future meetings are scheduled for December 4, 2013, January 8, February 5, and March 5, 2014 at the Hometown Buffet on South Lindbergh at 11 AM.
 Bob Eddy

PHOTO BREAKFAST CLUB

By Gene Niederschmidt

NEXT LUNCH

October 28, 2013 at 11:30am

Miss Sheri's Cafeteria

5406 Southfield Center

Lindberg and Tesson Ferry Road

We had 16 members attending our September luncheon at Ms. Sheri's.

A new member **Don and Sherry Mauser** attended for the first time and he retired on 24 September 2013.

Bob Edwards came for the first time in several months. Bob I just finished a series of radiation treatments. Bob be taking another scan to find out much more about his problem. We all wish Bob well!

Jerry and Linda Frintrup just returned from a wonderful trip to Newfoundland. Jerry said it was a bus tour.

Retiree **Bob Gestel** said he is interested in maintaining the trail system in Missouri. Bob is our trail guy.

Ron Updegrave returned from his trip to Pennsylvania. Ron visited what remains of family. Ron is interested in amateur baseball and he was able to see several tournaments.

Jerry and Betty Willett took a short vacation to Lake of the Ozarks recently. While they were there they looked up **Hank Bauer** who is trying to sell his house and return to St. Louis.

I reminded everybody that NARFE will have a Blue Cross representative at the October luncheon

This past September 23 I called **Herman Westridge** and asked how he was getting along. He doing just fine but he has to use a walker to get around.

Again on September 23 I put a call into **George Huelsman** and this is a message I got from the operator, "this phone has been disconnected no service available!" If anyone has information on George, let us know. Hope to see you all Oct 28.

Our last 2013 meeting is November 25, 2013. Our 2014 meetings are January 27, February 24, and March 24. Mark your calendars.

Gene N

CHART RESEARCHERS
ST. RAYMOND'S LUNCHEON

Harold Howard

Some of you old-timers from the Chart Research Division may remember that a group has been meeting for lunch at 1100 at St. Raymond's on the first Wednesday of even numbered months. The Lebanese food is still the same as it was 30 years ago so come on down and surprise us with your presence. The next meetings will be at 1100 on December 4, 2013 and February 5, 2014.

VOLUNTEER MAPPING EFFORTS**How Online Mapmakers Are Helping the Red Cross Save Lives in the Philippines**

<http://www.theatlantic.com/technology/archive/2013/11/how-online-mapmakers-are-helping-the-red-cross-save-lives-in-the-philippines/281366/>

Volunteers across the world are building the digital infrastructure for the organization's Typhoon Haiyan relief efforts



Hundreds of destroyed homes are visible in this aerial photograph from the Samar province of The Philippines. (Reuters)

It will be months before we know the true damage brought about by super typhoon Haiyan. The largest death tolls now associated with the storm are only estimates. Aid workers from across the world are now flying to the island nation, or they just recently arrived there. They—and Filipinos—will support survivors and start to rebuild.

But they will be helped by an incredible piece of technology, a worldwide, crowd-sourced humanitarian collaboration made possible by the Internet.

What is it? It's a highly detailed map of the areas affected by super typhoon Haiyan, and it mostly didn't exist three days ago, when the storm made landfall. Since Saturday, more than 400 volunteers have made nearly three quarters of a million additions to a free, online map of areas in and around the Philippines. Those additions reflect the land before the storm, but they will help Red Cross workers and volunteers make critical decisions after it about where to send food, water, and supplies.

These things are easy to hyperbolize, but in the Philippines, now, it is highly likely that free mapping

data and software—and the community that support them—will save lives.

[Red Cross Save Lives in the Philippines](#)

The Wikipedia of maps

The changes were made to [OpenStreetMap](#) (OSM), a sort of Wikipedia of maps. OSM aims to be a complete map of the world, free to use and editable by all. Created in 2004, it now has over a million users.

I spoke to Dale Kunce, senior geospatial engineer at the American Red Cross, about how volunteer mapping helps improve the situation in the Philippines.

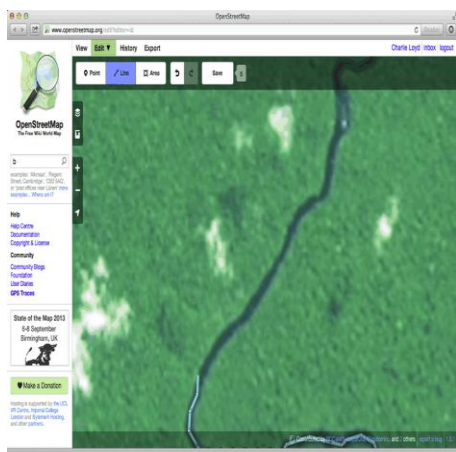
The Red Cross, internationally, recently began to use open source software and data in all of its projects, he said. Free software reduces or eliminates project “leave behind” costs, or the amount of money required to keep something running after the Red Cross leaves. Any software or data compiled by the Red Cross are now released under an open-source or share-alike license. While Open Street Map has been used [in humanitarian crises before](#), the super typhoon Haiyan is the first time the Red Cross has coordinated its use and the volunteer effort around it.

How the changes were made

The [410 volunteers](#) who have edited OSM in the past three days aren’t all mapmaking professionals.

Organized by the [Humanitarian OpenStreetMap Team](#) on Twitter, calls went out for the areas of the Philippines in the path of the storm to be mapped.

What does that mapping look like? Mostly, it involves [“tracing” roads into OSM](#) using satellite data. The OSM has a friendly editor which underlays satellite imagery—on which infrastructure like roads are clearly visible—beneath the image of the world as captured by OSM. Volunteers can then trace the path of a road, as they do in this GIF, created by the D.C.-based start-up, Mapbox:

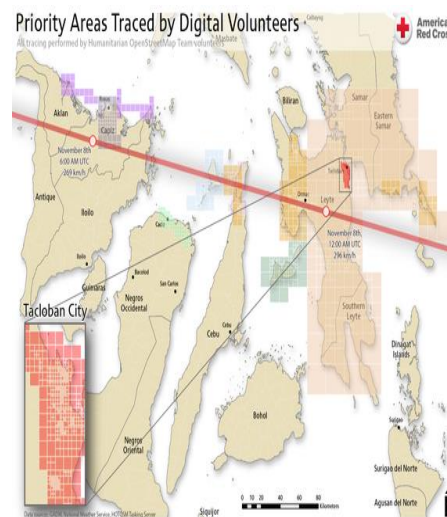


[Red Cross Save Lives in the Philippines](#)

Volunteers can also trace buildings in Mapbox using the same visual editor. Since Haiyan made landfall, volunteers have traced some 30,000 buildings.

Maps, on the ground

How does that mapping data help workers on the ground in the Philippines? First, it lets workers there print paper maps using OSM data which can be distributed to workers in the field. The American Red Cross has dispatched four of its staff members to the Philippines, and one of them—Helen Welch, an information management specialist—brought with her more than 50 paper maps depicting the city of Tacloban and other badly hit areas.



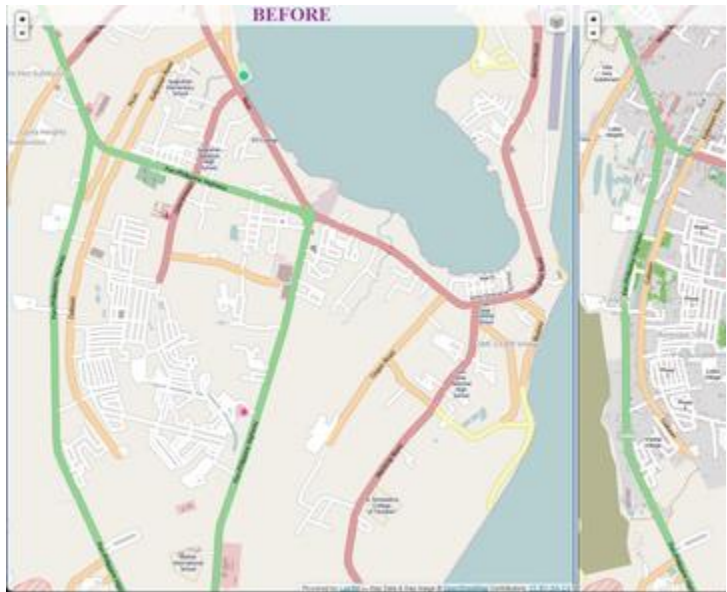
The red line shows the path of super typhoon Haiyan and the colored patches show where volunteers made additions to OpenStreetMap this weekend. Notice the extent of the edits in Tacloban, a city of more than 220,000 that bore the brunt of the storm. (American Red Cross)

Those maps were printed out on Saturday, before volunteers made most of the changes to the affected area in OSM. When those, newer data are printed out on the ground, they will include almost all of the traced buildings, and rescuers will have a better sense of where “ghost” buildings should be standing. They’ll also be on paper, so workers can write, draw, and stick pins to them.

Welch landed 12 hours ago, and Kunce said they “had already pushed three to four more maps to her.” The Red Cross began to investigate using geospatial data after the massive earthquake in Haiti in 2010. Using pre-existing satellite data, volunteers [mapped almost the entirety of Port-au-Prince](#) in OSM, creating data which became the backbone for software that helped organize aid and manage search-and-rescue operations. That [massive volunteer effort](#) convinced leaders at the American Red Cross to increase the staff focusing on their digital maps, or [geographic information](#)

[systems](#) (GIS). They've seen a huge increase in both the quality and quantity of maps since then.

[Red Cross Save Lives in the Philippines](#)



A part of the city of Tacloban before and after it was mapped by the Humanitarian OSM Team. Roads, buildings, and bodies of water were missing before volunteers added them. ([@Rbanick](#))

But that's not all maps can do.

The *National Geospatial-Intelligence Agency* (NGA), operated by the U.S. Department of Defense, has already captured satellite imagery of the Philippines. That agency has decided where the very worst damage is, and has sent the coordinates of those areas to the Red Cross. But, as of 7 p.m. Monday, the Red Cross doesn't have that actual imagery of those sites yet.

"If you put a map in the hands of somebody, they're going to ask for another map."

The goal of the Red Cross geospatial team, said Kunce, was to help workers "make decisions based on evidence, not intuition." The team "puts as much data in the hands of responders as possible." What does that mean? Thanks to volunteers, the Red Cross knows where roads and buildings *should* be. But until it gets the second set of data, describing the land after the storm, it doesn't know where roads and buildings actually are. Until it gets the new data, its volunteers can't decide which of, say, three roads to use to send food and water to an isolated village.

Right now, they can't make those decisions.

Kunce said the U.S. State Department was negotiating with the NGA for that imagery to be released to the Red Cross. But, as of publishing, it's not there yet.

When open data advocates discuss data licenses, they rarely discuss them in terms of life-and-death. But, every hour that the Red Cross does not receive this imagery, better decisions cannot be made about where to send supplies or where to conduct rescues.

And after that imagery *does* arrive, OSM volunteers around the world can compare it to the pre-storm

structures, marking each of the 30,000 buildings as unharmed, damaged, or destroyed. That phase, which

[Red Cross Save Lives in the Philippines](#)

hasn't yet begun, will help rescuers prioritize their efforts.

OSM isn't the only organization using online volunteers to help the Philippines: MicroMappers, run by a veteran of OSM efforts in Haiti, used [volunteer-sorted tweets to determine areas](#) which most required relief. Talking to me, Kunce said the digital "commodification of maps" generally had contributed to a flourishing in their quantity and quality across many different aid organizations.

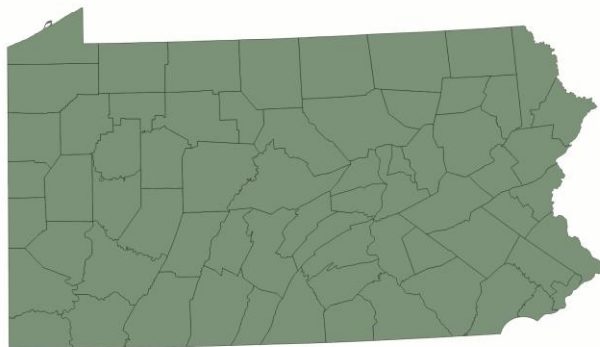
"If you put a map in the hands of somebody, they're going to ask for another map," said Kunce. Let's hope the government can put better maps in the hands of the Red Cross—and the workers on the ground—soon.

THE SKYTRUTHING MOVEMENT: DIY ENVIRONMENTAL MONITORING

From Al Anderson

In August, thousands of people were introduced to SkyTruth through an incredibly favorable feature story in the Washington Post magazine (in case you missed it, you can see the story and video feature [here](#)). As droves of visitors looked us up on social media and browsed our recently relaunched website (www.skytruth.org), we asked you for help with our inaugural skytruthing project - FrackFinder PA: Project Tadpole. In this phase of the [FrackFinder](#) initiative used crowdsourcing to study unconventional drilling and hydraulic fracturing (fracking) in Pennsylvania. And we were blown away by your response. We had almost 90,000 images to analyze, but our 233 volunteers took only 29 days to finish the entire project.

After looking at nearly 3,000 sites over three years (and each image had to be viewed by 10 different volunteers to ensure accuracy), our skytruthers found a total of 1,420 active wellpads between 2005 and 2010. Out of all those sites, 950 were cleared in the last two years of the study. Be sure to check out the [interactive map](#) and [our blog](#) for more results.



Above: Animation of active Marcellus Shale wellpads

across Pennsylvania in 2005 (yellow), 2008 (orange), and 2010 (red). Click the image to learn more or explore the whole state in an [interactive map](#).

THE SKYTRUTHING MOVEMENT

We have always talked about the [skytruthing movement](#) as a sort of "Tom Sawyer" approach to conservation and environmental awareness. We're asking everyone to help us perform many simple image analysis tasks that would otherwise take us a long time to process. But this approach is not just about doing our work for us, it enables concerned citizens like you to take ownership of the environmental issues you care about. [Subscribe to the SkyTruth blog](#) and we'll let you know when the next phase of FrackFinder is ready for your help!

The National Map Corps - Volunteers Receive Recognition

Citizen volunteers are making significant additions to the U.S. Geological Survey's ability to provide accurate information to the public. Using crowd sourcing techniques, the USGS project known as [The National Map Corps](#) (TNMC) encourages citizen volunteers to collect manmade structure data in an effort to provide accurate and authoritative spatial map data for the National Geospatial Program's web-based [The National Map](#).

<http://nationalmap.gov/TheNationalMapCorps/index.html>

These structures can include schools, hospitals, post offices, police stations and other important public places along with data from other sources, the data currently being collected by volunteers become part of [TNM Structures dataset](#) which is made available to users free of charge.

In an effort to recognize the important work being done by

Recognition Category	Number of points
<i>Order of the Surveyor's Chain</i>	25 – 49
<i>Society of the Steel Tape</i>	50 – 99
<i>Pedometer Posse</i>	100 – 199
<i>Circle of the Surveyor's Compass</i>	200 – 499
<i>Stadia Board Society</i>	500 – 999
<i>Alidade Alliance</i>	1000 – 1999
<i>Theodolite Assemblage</i>	2000+

volunteers, TNMC has created a [recognition program](#) based on the number of points a volunteer contributes. Levels of recognition are displayed in the form of [icons or badges](#) of antique catalog drawings of different and increasingly sophisticated pieces of surveying equipment. Each badge comes with a description of the item and encouragement to achieve the next level. As a volunteer attains each level, a

congratulations email is sent, and the [accomplishments are recognized](#)

The National Map Corps

Becoming a volunteer for TNMC is easy; go to [The National Map Corps project site](#) to learn more and to sign up as a volunteer. If you have access to the Internet and are willing to dedicate some time editing map data, we hope you will consider participating.

While some familiarity with the area that a volunteer chooses is helpful, you do not have to live near a particular place to contribute. The [tools on TNMC website](#), along with ancillary information available on the Internet, are generally sufficient to edit a distant area. There are presently [nineteen states](#) available for volunteers to choose to update structures in.

See for yourself how much fun participating can be. Go to [The National Map Corps home](#) page, give it a try and before you know it you'll be hanging out with the Pedometer Posse!

ASPRS NEWS

SAINT LOUIS REGION

On October 28th, St. Louis Region Director Dave Kreighbaum and Central Region Director Barry Budzowski presented the plan to consolidate our two regions into one region at the ASPRS Conference in San Antonio. The ASPRS National Board of Directors unanimously approved our intent to consolidate and gave their endorsement to proceed with this venture. Next steps include:

- Sharing the by-laws and transition plans with our respective regions. Transition plans can be downloaded from: <http://stl.asprs.org/consolidated-region-transition-plan-and-draft-by-laws/>
- Finalizing by-laws for the new combined region by mid-to-late December.
- Decide on a region name. Suggestions include:
 - · The Heartland Region
 - · The Mid-Continent Region
 - · The Great Plains Region
 - · The Great Rivers Region
 - · The Central Region
 - · If you have additional suggestions, please submit by November 18 and we will include them in a soon to follow survey.
- Holding our first official joint Board meeting in January
- Soon accepting nominations for Vice President of the new region

The ASPRS Board of Directors is excited to see our regions acting on the recommendations that they put forth in their restructuring plan. People are very interested in the logistics and mechanics of how the merger will happen and are looking at this as the template for how consolidation should proceed. Thank you all for your participation in this trailblazing endeavor!

Your St. Louis Region President,
Greg Brunner

[ASPRS NATIONAL GIS DIVISION 2014 SEMINARS](#)

The ASPRS GIS Division, in cooperation with CaGIS and GLIS, is sponsoring free online live seminars throughout the year.

<http://www.asprs.org/GISD-Division/Online-Seminars.html>

Scheduled seminars for 2014

[Building an Agile, Modern, and Open Geospatial Platform - January 31, 2014](#)

Over the last several years, the National Park Service (NPS) has developed a set of tools and processes that bridge the gap between traditional GIS and the modern web. In this presentation, Nate Irwin will talk about why "modernizing" traditional GIS is important and how the Park Service used an agile and modular open source strategy to bring geospatial in the NPS more inline with today's technologies and social patterns.

Presenter: Nathaniel Irwin

Nate Irwin leads the NPMAP team for the National Park Service. This team builds digital maps for partners both within and outside of the National Park Service.

[NHD Applications Utilizing StreamStats -- February 28, 2014](#)

[Modernization of the National Spatial Reference System -- March 14, 2014](#)

[Beyond Visualization: Enabling 3D Spatial Analysis of Vector Geometry -- April 11, 2014](#)

[Landscape Disturbance Related to Natural Gas Extraction in the Mid-Atlantic Region -- May 23, 2014](#)

[Terrestrial and Aerial Lidar for the Measurement and Monitoring of Forest Ecosystem Services -- June 27, 2014](#)

[An Overview of Considerations and Methodologies for High Resolution Land Cover Mapping -- July 25, 2014](#)

[Mapping Grade Products from the Unmanned Aerial System: The photogrammetric Approach -- August 29, 2014](#)

[GEOGRAPHY QUIZ](#)

Enjoy and send your scores to the newsletter

<http://www.jetpunk.com/quizzes/how-many-countries-can-you-name.php>

[THIS IS YOUR NEWSLETTER](#)

Send your write-up on personal, family, friends, vacation, or employment remembrances to:

Jerry Lenczowski
9083 Whitehaven Dr.
St. Louis, MO 63123
or e-mail it to aerochart@sbcglobal.net

Your write-up(s) are due by February 1, 2014 for the next issue. Thanks for your support of NGAA-West.

[NGAA-WEST EVENTS CALENDAR](#)

[2014 LUNCHEON MEETINGS](#)

Pietro's Restaurant
3801 Watson Road
Social at 11:30 A.M. Lunch at 12:00
December 11, 2013,
March 26, June 25, September 24, and
December 17, 2014

[MIXED BOWLING LEAGUE](#)

4 PM Wednesday at Sunset Lanes
September 4, 2013 to April 2014

[MEN'S INVITATIONAL BOWLING LEAGUE](#)

4PM Thursdays at Sunset Lanes
September 5, 2013 to April 2014

[PHOTO BREAKFAST CLUB](#)

At Miss Sheri's
Lindbergh and Tesson Ferry Road
Meet at 11:30 AM
November 25, 2013
January 27, February 24, and March 24, 2014

[DUFFY'S INFORMAL LUNCHEONS \(DILS\)](#)

at Duffy's in Kirkwood
and

[POINTS GROUP](#)

Hometown Buffet on South Lindbergh
Both meet at 11AM
December 4, 2013, January 8, February 5, and March 5, 2014

[CHART RESEARCHERS](#)

at St. Raymond's Luncheon
Meet at 11 AM
December 4, 2013 and February 5, 2014

[NEGATIVE ENGRAVERS LUNCHEON](#)

El Maguey restaurant in Concord Plaza
Meet at 12:30 PM
December 12, 2013, January 9, February 13, and March 13, 2014

NGAA-WEST ALUMNI AT NGA

NOVEMBER 7, 2013



Front Row: Donald Poff, Charles Doolin, Robert Eddy, Robert Bentrup, Dale Winters, Kent Kenniston, Jimmy Boyd, Robert Meinhardt, Nick Decker, Bobbi Lenczowski

Middle Row: Casey Szpak, Ward Klocke, Dennis Terhaar, Marilyn Chryst, Don Schmidt, Frederick Meister, Roger Davis, Leslie Kemp, Mary Decker

Top Row: James Stanton, John Novak, Lewis Rosenbaum, Francis Aufmuth, John Rainey, Robert Pankey, LeRoy Schmieder, Jimmie Hilterbrand, Donald Neubacher, Gene Sylvester, Jerry Lenczowski

SEPTEMBER 2013 LUNCHEON PHOTOGRAPHS



Bob Edwards

Jim Mohan

Kent Kenniston

Bob Eddy

Bob Meinhardt

SEPTEMBER 2013 LUNCHEON PHOTOGRAPHS



Russ Wall

Jim Mohan



Pat Keller

Pat Wiese



Bob Pankey



Bob Meinhardt

Jim Hilterbrand

Dale Winters



Norma and Charles Doolin



Wells Huff



Frank and Sharron Aufmuth

Fred Meister



Nick Decker

Jim and Phyllis Stanton



Larry Knopf

Bill Riordan

SEPTEMBER 2013 LUNCHEON PHOTOGRAPHS



Marilyn Chryst Johanna Captiva John Koberg



Jim Ragan



Dennis Terhaar



Harry and Christine Lemakis

Jane and Ed de la Peña



Dale Winters

Beverly and Jimmie Hilterbrand



Casey Szpak



Lewis Rosenbaum

Bob Pankey

Pat Reed



Marilyn and John Chelonis

Donna and Art Pekarek

SEPTEMBER 2013 LUNCHEON PHOTOGRAPHS



NORMA DOOLIN WITH “Kevin - the One Man Circus”, and his twin brother, Chris.

A Special Thanks to



For Donating the Material

And

Printing this Newsletter

For your printing or digital replication needs, contact
NJVC at 636-287-5128 or 5162

NGAA West
P.O. BOX 510091
ST. LOUIS MO 63151-0091

PRSR STD
US POSTAGE Paid
SAINT LOUIS, MO
PERMIT 4610

RETURN SERVICE REQUESTED

NGAA-WEST MEMBERSHIP FORM

YOU'LL MEET OLD FRIENDS AND CO-WORKERS WHO SHARE COMMON INTERESTS

We meet the fourth Wednesday of the month in March, June, September, and December. The December date will vary due to Christmas. At the meetings, we have a social hour, lunch, business meeting, entertainment, and informative programs. Our newsletter, published and distributed to members the month prior to the luncheons, include all the details of the upcoming luncheon related to place, menu, entertainment and cost for each person attending. Our newsletter also includes information about member activities and association business. If you are a golfer, many members play a four-person scramble every Thursday, beginning in mid-April and ending in mid- October. There also is a Winter Mixed Bowling League on Wednesday and a Men's Bowling League on Thursday. However, the true fun of belonging to the National Geospatial Intelligence Alumni Association West Chapter is that it provides the opportunity to renew acquaintances and talk about the good old days.

JOIN NOW OR UPDATE YOUR MEMBERSHIP INFORMATION

Membership Dues are \$10.00 per year or \$100.00 For a Lifetime Membership

Note: Applicants that have been Arsenal Credit Union Members, in good standing for more than one year, will receive a \$40 account credit after joining NGAA-W as a Lifetime Member

SUBMIT THE COMPLETED MEMBERSHIP FORM TO

NGAA West, P.O. BOX 510091, ST. LOUIS, MO 63151-0091

Sign me up for membership in the NGAA-WEST. Enclosed is \$_____ for my membership dues. Cash or

Check Number _____ Arsenal Credit Union Account Number _____

Last Name _____ First Name _____ MI _____ Preferred Name _____

Retirement Date (Mo/Yr.) _____ Organization: NGA__NIMA__DMA__Other_____ Date of Birth (Optional) _____

Spouse First Name _____ MI _____ Spouse Preferred Name _____ Spouse DOB (Optional) _____

Main Address _____ City _____ State _____ Zip Code _____

2nd (Winter) Address _____ City _____ State _____ Zip Code _____

Telephone No. Primary _____ Winter Telephone No. _____

E-Mail Address s _____